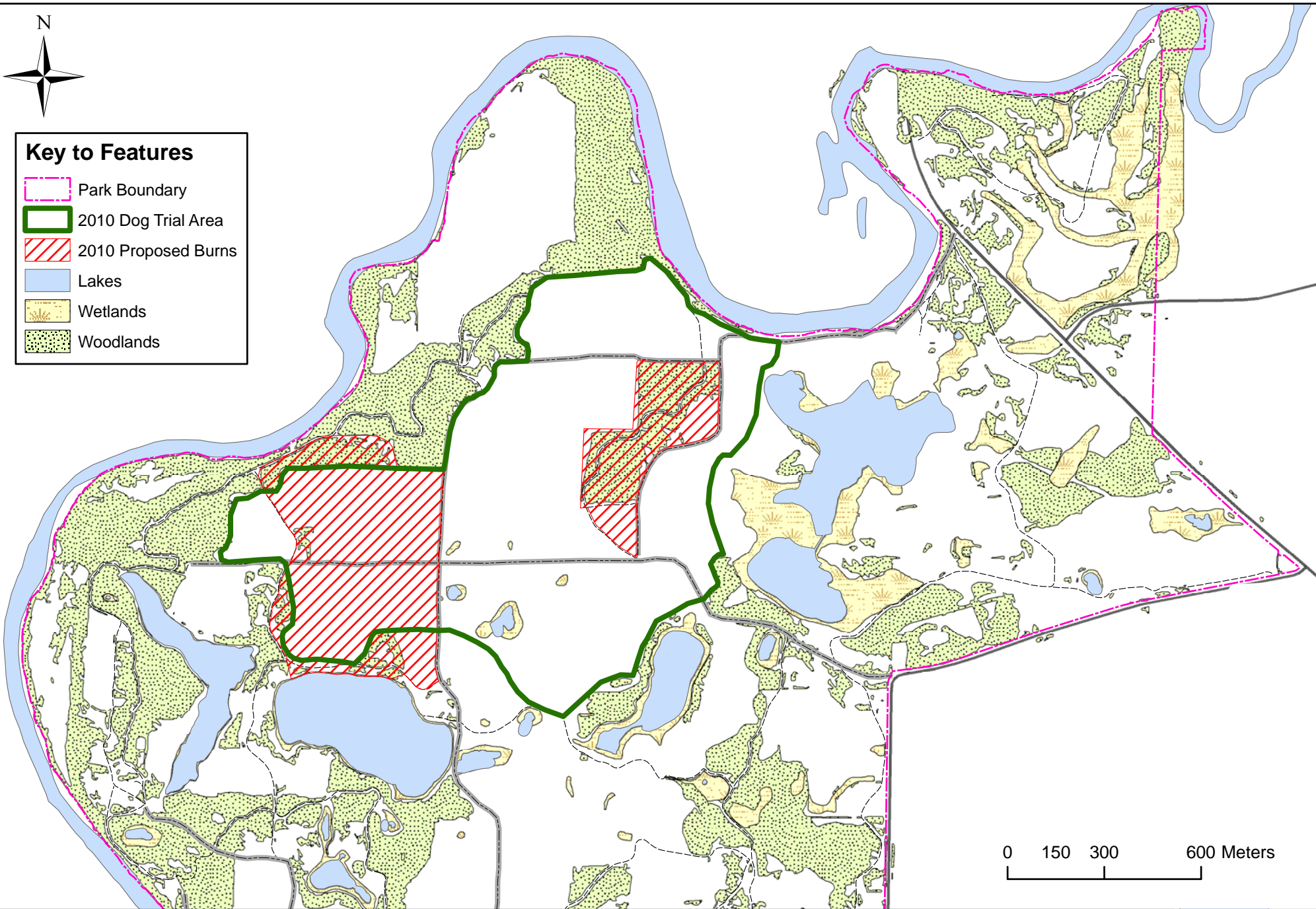




Key to Features

-  Park Boundary
-  2010 Dog Trial Area
-  2010 Proposed Burns
-  Lakes
-  Wetlands
-  Woodlands



Map prepared by Three Rivers Park District
Department of Natural Resources
Wildlife Section - Carol Carter
January 21, 2010

Crow-Hassan Park Reserve

2010 Proposed Burns in the Dog Trial Area

